

SRG



Western Oregon
UNIVERSITY

Facilities Master Plan

Board of Trustees Briefing, October 25, 2017



Agenda



1. The Consultant Team
2. Planning Schedule
3. Topics & Approach
4. Discussion: Defining Success

OUR TEAM

SRG Partnership



Kent Duffy
Principal-in-Charge



Eric Ridenour
Project Manager,
Senior Planner



Nicolai Kruger
Planner, Higher
Education Architect



Aaron Pleskac
Athletic Facilities Resource



Lisa Petterson
Sustainability Resource

Biddison Hier



Tom Hier
Project Leader for
Space Analyses

Walker Macy



Michael Zilis
Principal Landscape Architect

Ken Pirie
Planner, Project Manager

Andrea Kuns
Landscape Architect

PAE

Scott Bevan
Principal Electrical Engineer

Nick Collins
Principal Mechanical Engineer

Kittelson & Associates

Phill Worth
Principal Planner

Fred Wismer
Senior Engineer

BHE Group

Monica Anderson
Principal Civil Engineer

Geoff Larsen
Civil Engineer, Project Manager

Shaping Space to Support Vitality



Visualizing Change

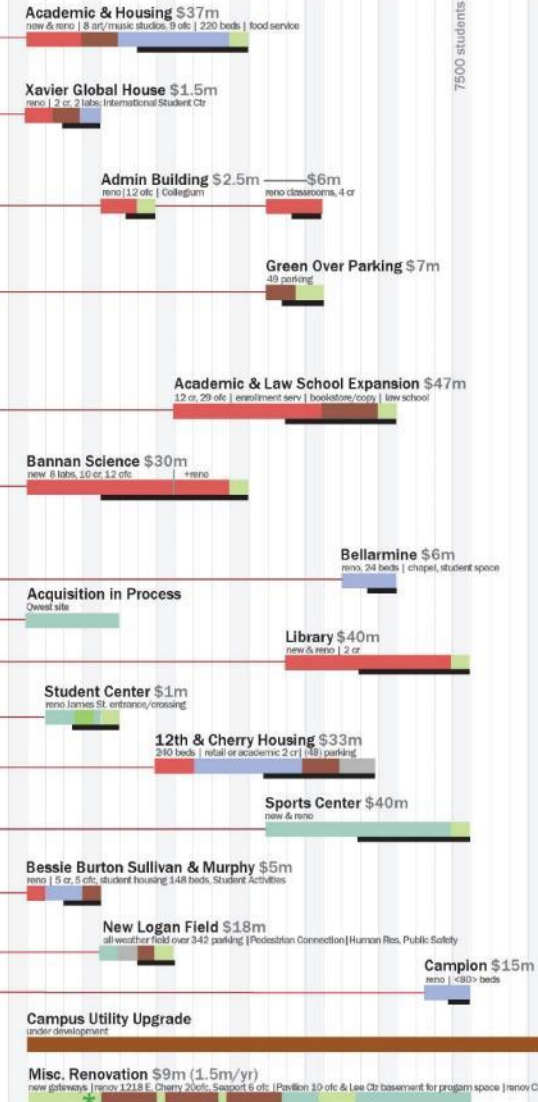


- academic
- support
- housing
- student life
- open space
- lease space
- construction

implementation
phase 1
2006 - 2016

proposed new mimp boundary

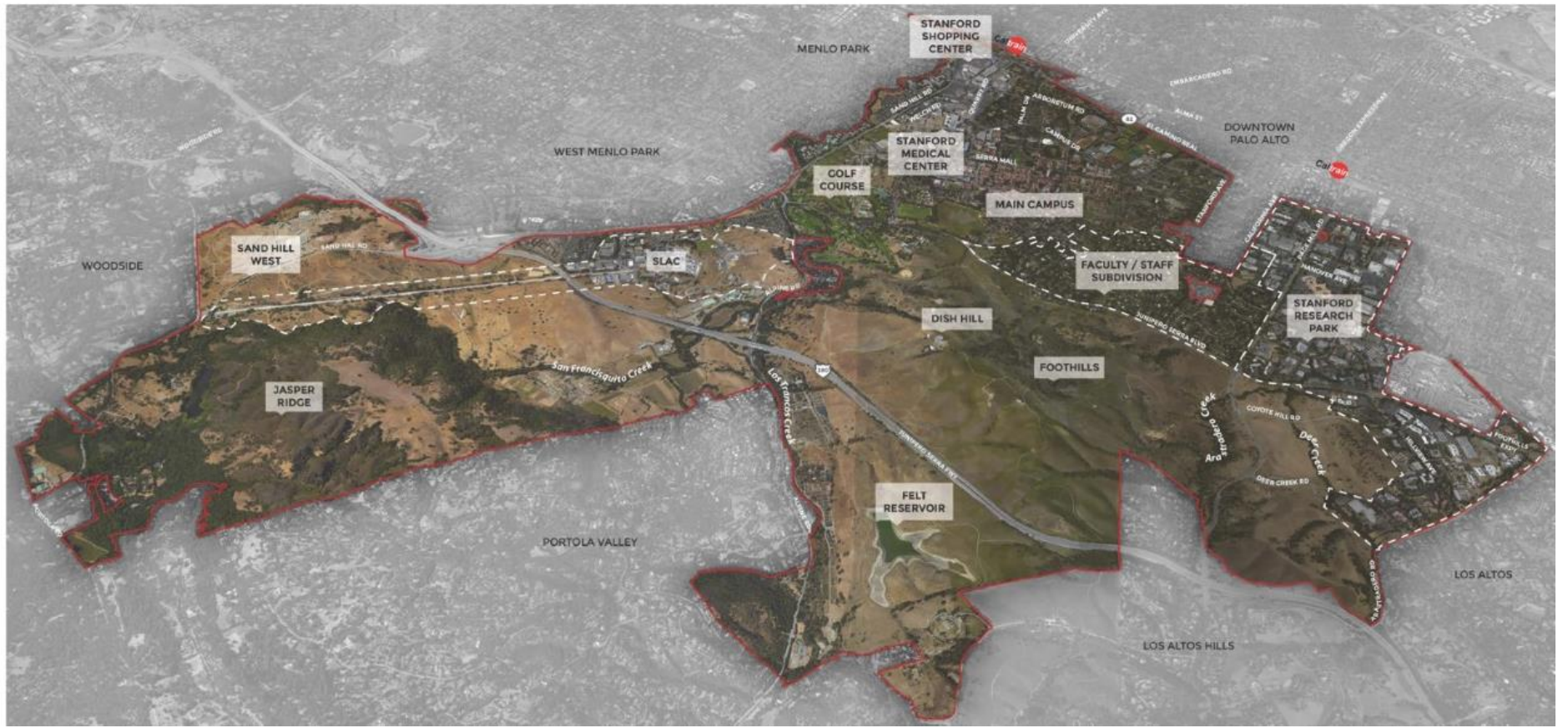
2006 2007 2008 2009 2010 2011 2012 2013 2014 2015 2016
f w sp s f w sp s f w sp s f w sp s f w sp s f w sp s f w sp s f w sp s f w sp s



7500 students

key indicators	'06	'07	'08	'09	'10	'11	'12	'13	'14	'15	Totals
Classrooms	0/8	7/8	17/18	17/18	21/21	35/21	36/21	36/21	36/21	36/21	36/21
Instructional Spaces	0/20	2/20	10/20	18/20	18/20	18/20	18/20	18/20	18/20	18/21	18/21
Faculty/Staff Offices	0/50	5/50	49/77	64/77	70/96	99/96	99/100	99/100	99/106	99/106	99/106
Beds	0/150	148/150	148/400	368/400	368/650	632/650	552/900	552/900	552/900	552/1050	552/1050
Parking	0/139	0/139	342/207	342/207	381/237	343/237	343/275	343/275	343/275	343/297	343/297
\$	\$-	\$8m	\$22m	\$68.5m	\$14.5m	\$87.5m	\$96.5m	\$-	\$-	\$-	\$29m





Schedule

	16-Oct-17	23-Oct-17	30-Oct-17	06-Nov-17	13-Nov-17	20-Nov-17	27-Nov-17	04-Dec-17	11-Dec-17	18-Dec-17	25-Dec-17	01-Jan-18	08-Jan-18	15-Jan-18	22-Jan-18	29-Jan-18	05-Feb-18	12-Feb-18	19-Feb-18	26-Feb-18	05-Mar-18	12-Mar-18	19-Mar-18	26-Mar-18	02-Apr-18	09-Apr-18	16-Apr-18	23-Apr-18							
		Board				<i>Thanks-giving</i>		<i>Finals</i>	<i>Winter Break</i>	<i>Winter Break</i>	<i>Campus Closed</i>	<i>Winter Break</i>			Board									<i>Finals</i>	<i>Spring Break</i>				Board						
Discovery																																			
Work Sessions			W										W																						
Reports										R																									
Exploration																																			
Work Sessions																		W																	
Reports																					R														
Decision																																			
Work Sessions																							W												
Reports																									R				R						

Supporting the Strategic Plan

Vision:

*To become Oregon's **campus of choice** for students, faculty and staff who seek a **student-centered learning community**.*

STUDENT SUCCESS

*Provide a **campus environment that enhances learning** & the development of the whole person.*

ACADEMIC EXCELLENCE

*Ensure appropriate class sizes to **maximize faculty-student & student-student interactions**.*

COMMUNITY ENGAGEMENT

*Expand **activities & partnerships** with local & regional organizations.*

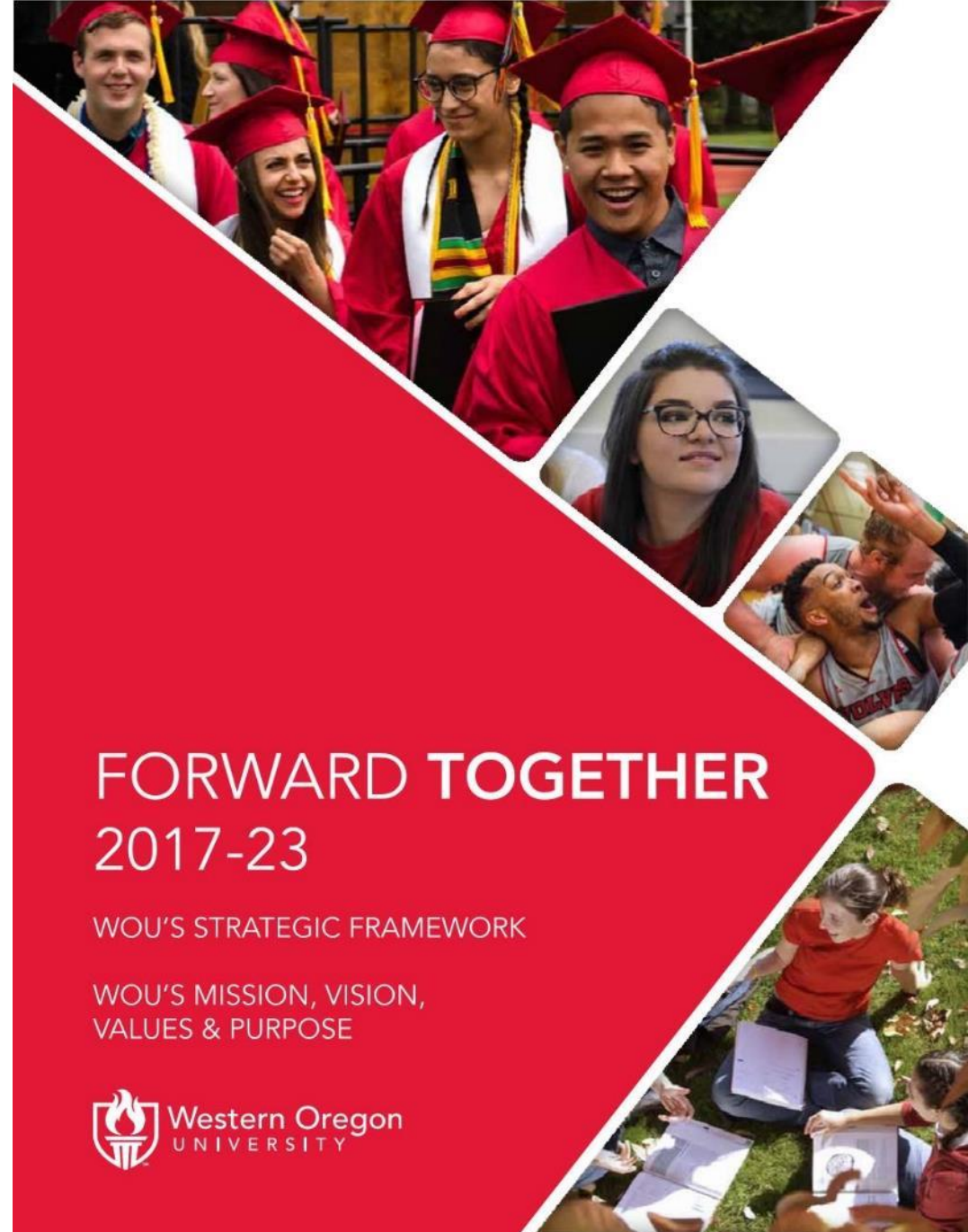
ACCOUNTABILITY

*Strengthen & expand **community college** partnerships...*

SUSTAINABILITY

*Increase & support **sustainable environmental systems** for campus grounds, infrastructure & physical facilities.*

*Ensure the availability & **effective utilization** of **accessible & comfortable** classrooms, offices & meeting spaces*



FORWARD TOGETHER
2017-23

WOU'S STRATEGIC FRAMEWORK

WOU'S MISSION, VISION,
VALUES & PURPOSE





• Strength:

Character: Beautiful Campus; Compact & Walkable Scale

• Challenge:

Exposure: 'If we can get people here, they see what a gem this campus is.'



Strength: Bold **Open Spaces** (Grove, etc.)

Challenge: Make the Campus Experience More **Cohesive**

Strong Existing Programs:

- Education:
 - Deaf Studies/ASL
 - Leadership
 - Health & Exercise
- Music
- Gerontology
- Pre-Nursing
- Business
- Behavioral Sciences

Challenge:

- What's Next?



Class of 2017 demographics

- 1,668 individuals have earned 1,680 degrees
- ~975 are attending Commencement
- 86% of grads are receiving a bachelor's
- 14% of grads are receiving a master's
- Our youngest grad receiving a bachelor's is 19 years old
- Our youngest grad receiving a master's is 21 years old.
- The most experienced grad receiving a bachelor's is 63 years young
- The most experienced grad receiving their master's is 61 years young
- Grads come from 33 of 36 Oregon counties; 25 states and 9 countries
- 11 students have completed 2 bachelor's degrees
- One student is completing 2 master's degrees.
- 14 students receiving a bachelor's degree have a 4.00 GPA
- 63 students receiving a master's degree have a 4.00 GPA
- 166 students are graduating Summa cum laude (GPA >3.8)
- 128 students are graduating Magna cum laude (GPA 3.65-3.79)
- 135 students are graduating Cum laude (GPA 3.5-3.64)

#wougrad



University Diversity Committee (UDC)
Diversity Initiative Grant

NON-TRADITIONAL STUDENT LOUNGE



Come in and meet fellow non-traditional students, make connections, hang out or have a cup of coffee.

What is a Non-Traditional student?
WOU defines a Non-Traditional student as any student that is, but not limited to:

- 25 years or older
- Has a dependent
- Returning to school after an extended break




Women of Culture Celebration Dinner

3.8.17 • 6-8 p.m.
The Summit • Tickets \$3



Nationally renowned spoken word poet & author
Dominique Christina




2016 AFRICAN CULTURAL NIGHT

May 7 5 p.m. - 7 p.m.

AFRICAN FOOD, FASHION SHOW, AFRICAN DANCE, KEYNOTE ADDRESS AND MORE \$3

INSIDE AFRICA: THE OPPORTUNITIES ABOUND
KEYNOTE ADDRESS WILL BE PROVIDED BY DR. ISIDORE LOENBE, ASSOCIATE PROFESSOR OF ANTHROPOLOGY AT WOU

Gentle House 855 Monmouth Ave. N., Monmouth, Oregon 97361




- Strength: Commitment to **Diversity**
- Challenge: Creating **Common Ground**

Housing



- Strength: Recent **Successful Models**
- Challenge: **Dispersed and Outmoded** Housing Models



- **Master Planning for Space Optimization:** Schedule, Utilization, & Efficiency

Change Factors in Higher Education

- Changes in teaching and learning
- Increasing diversity of populations
- Reaping efficiencies in a challenging funding climate



**All have implications for facilities
and space optimization activities**

Data



Analyses &
Metrics



Results &
Recommendations

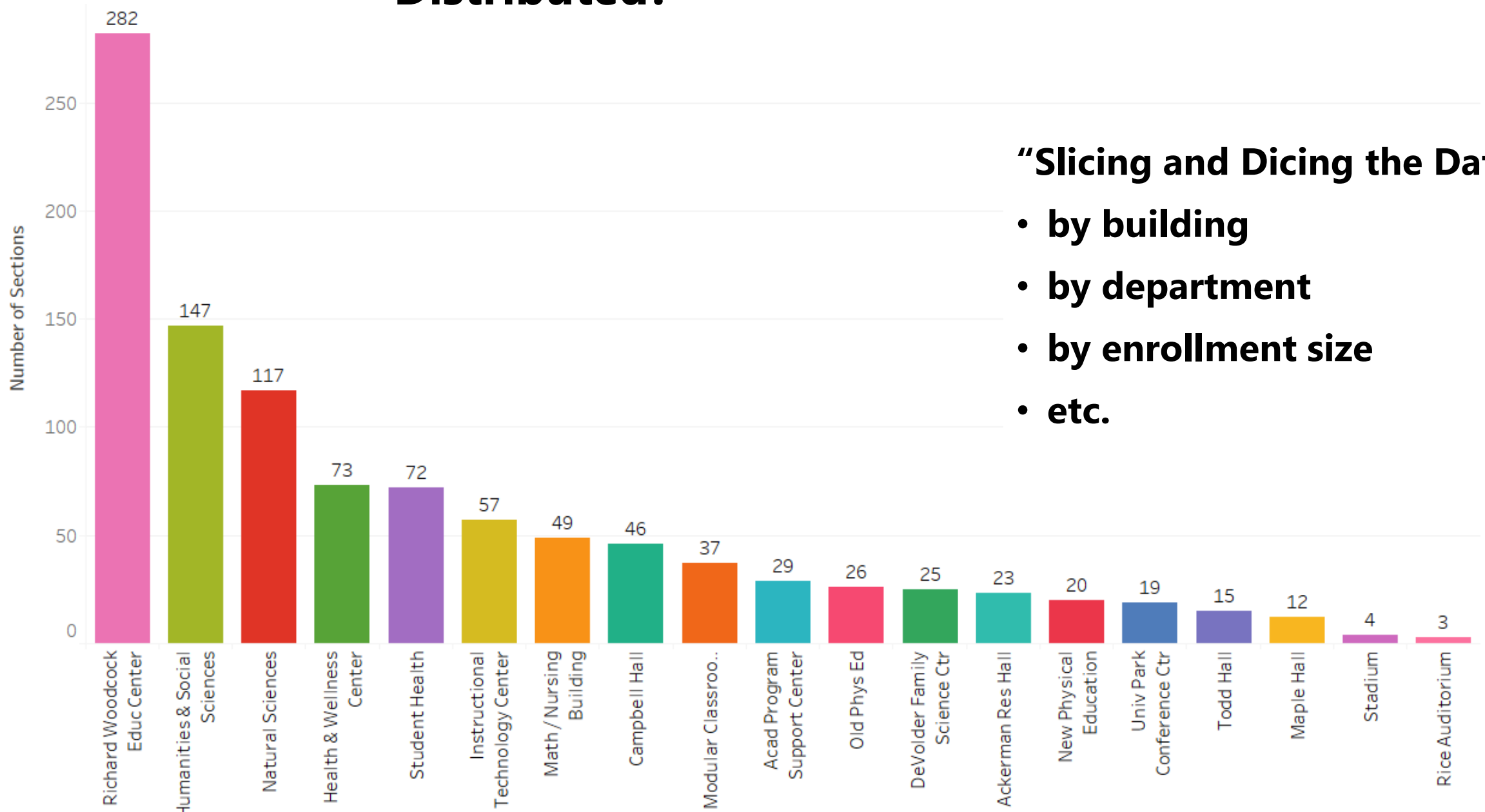


X25[®]



- › Inventory Size and Mix
- › Capacity for Growth
- › Support Spaces
- › Policies and Processes
- › Assessment Tools

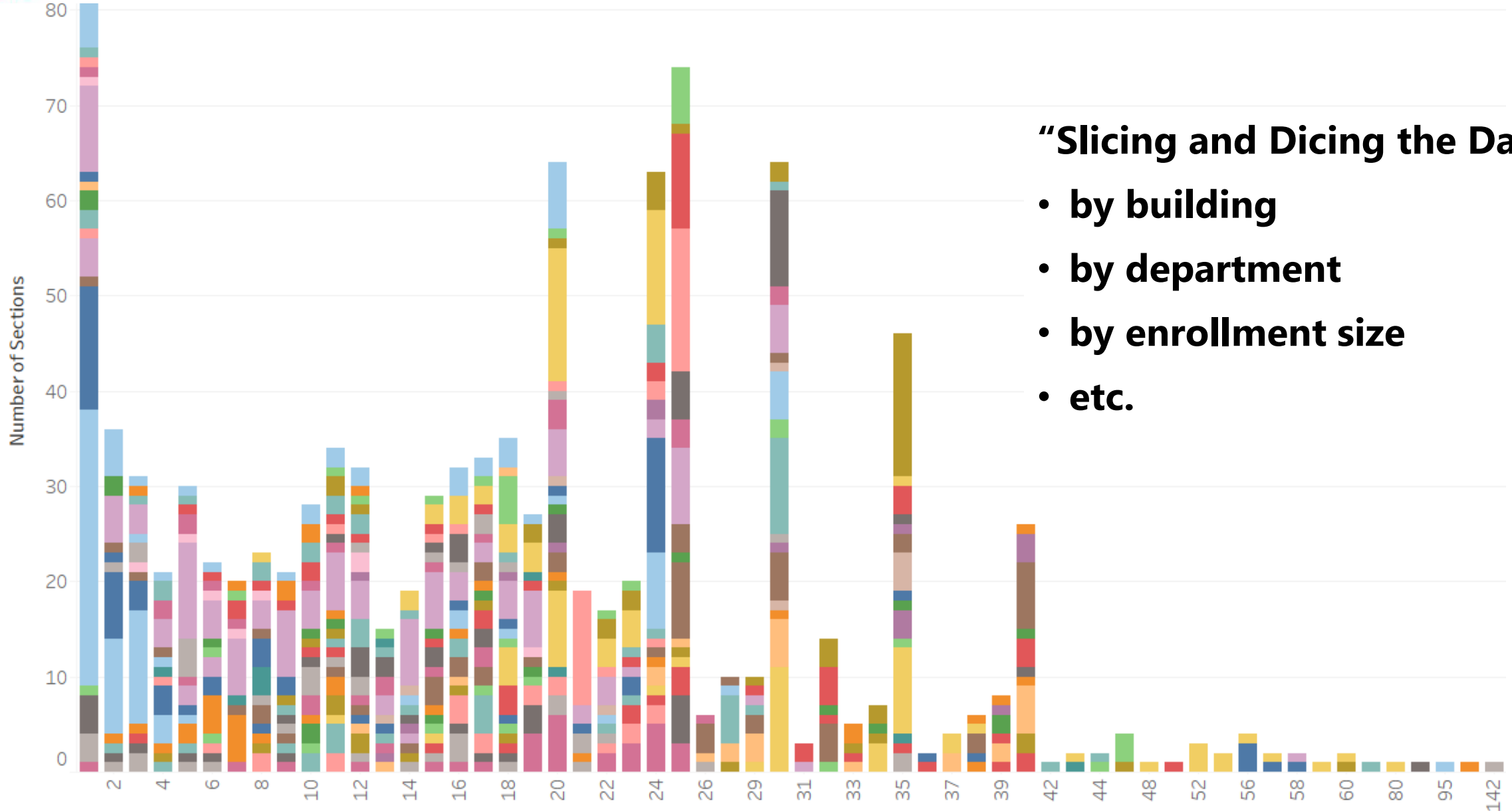
How are WOU Sections Distributed?



“Slicing and Dicing the Data”

- by building
- by department
- by enrollment size
- etc.

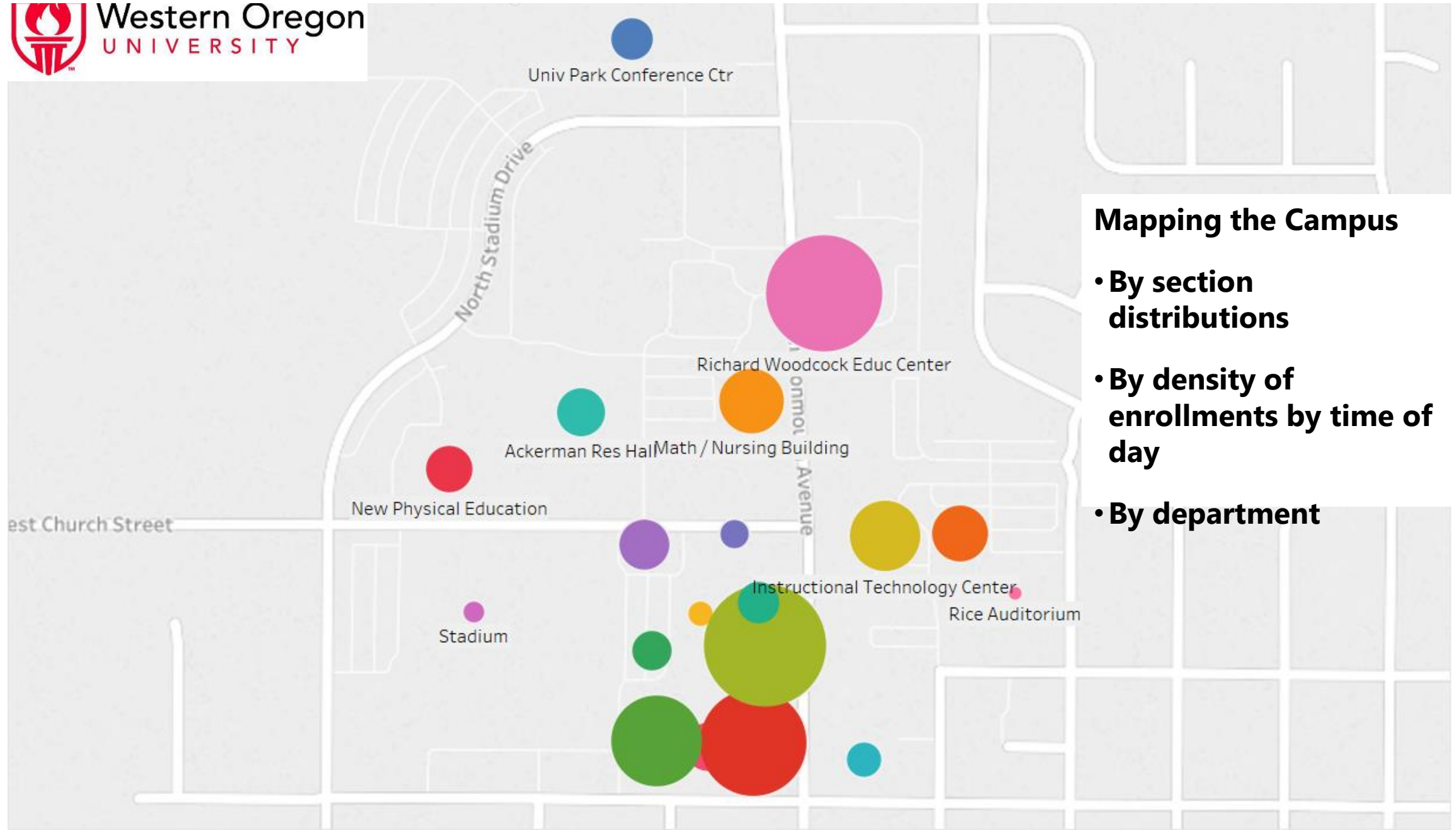
How are WOU Sections Distributed?



“Slicing and Dicing the Data”

- by building
- by department
- by enrollment size
- etc.

Visualizing Space Use by Building



Mapping the Campus

- By section distributions
- By density of enrollments by time of day
- By department



Concept: Align spaces with pedagogies, rather than the reverse



Diversity and Space Planning

- Scheduling & Non-Traditional Students
- More Diversity in Delivery Methods
- Distance Learning & Hybrid Offerings





Support the Student Athlete

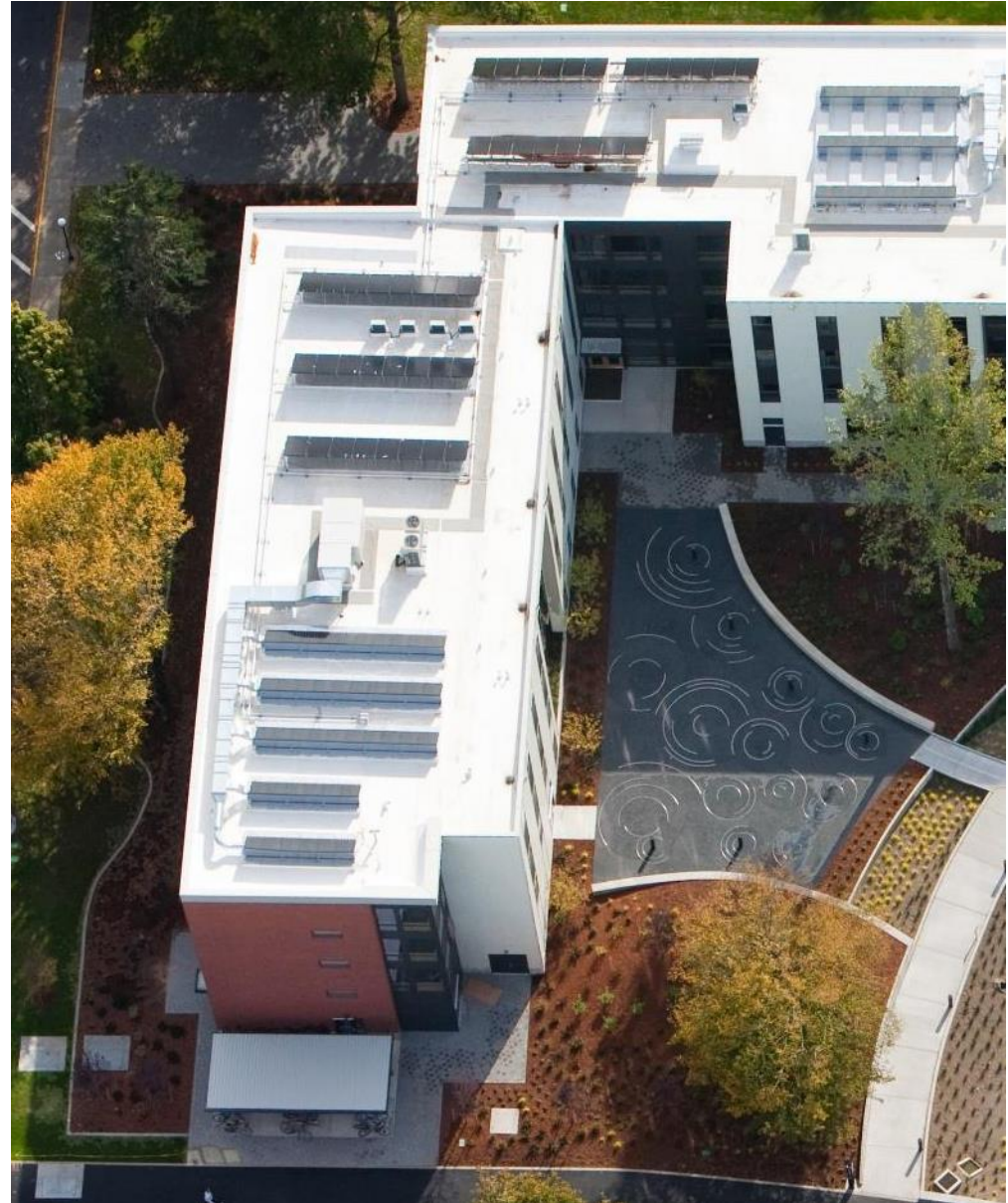






**How will the Master Plan enhance/promote
Western Oregon University's identity in the community?
How will the Master Plan enhance/promote
our relationship with the community?**





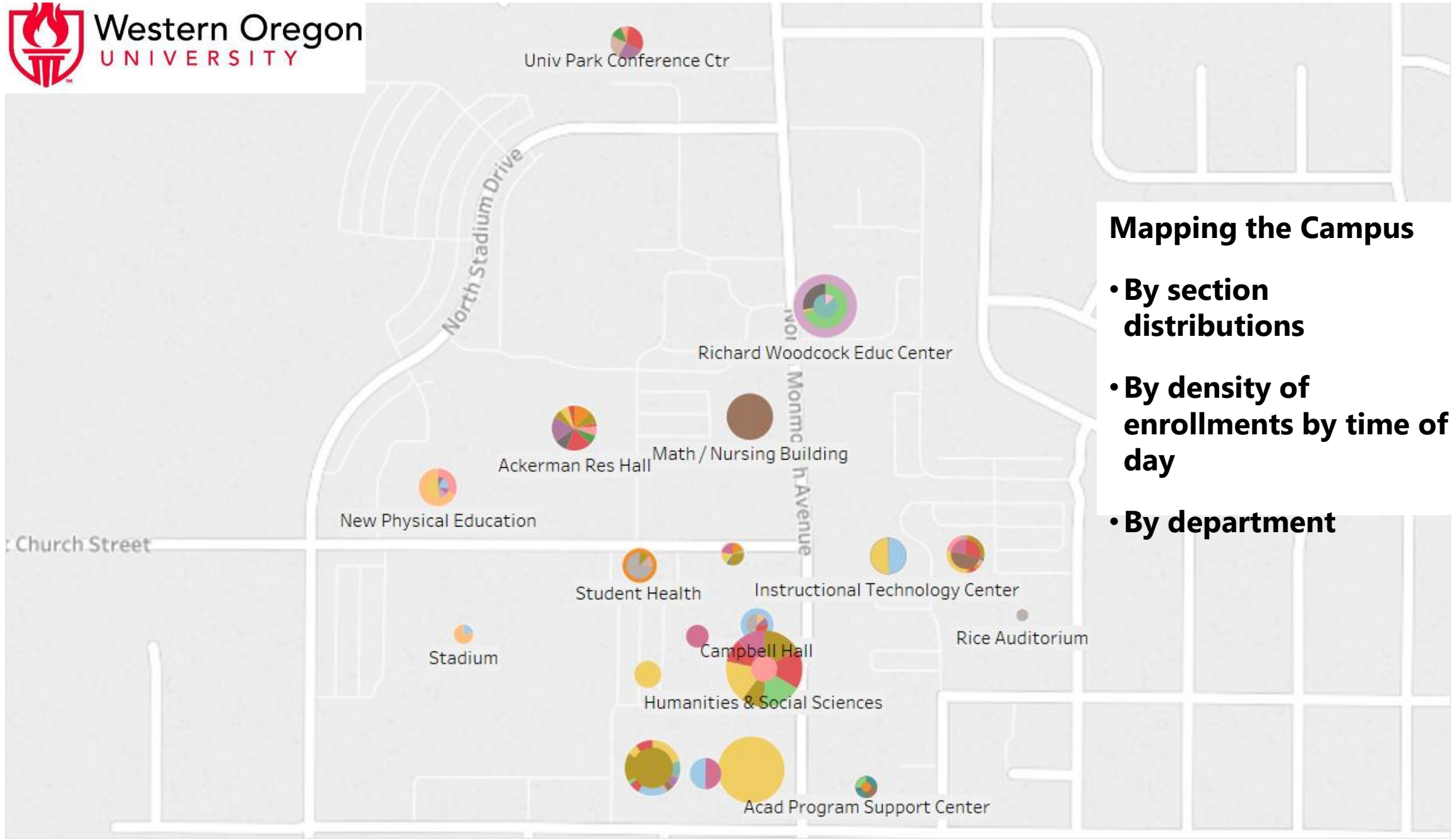
Discussion: How Do You **Define Success**?



A Fabric of Learning in Spaces



Visualizing Space Use by Building

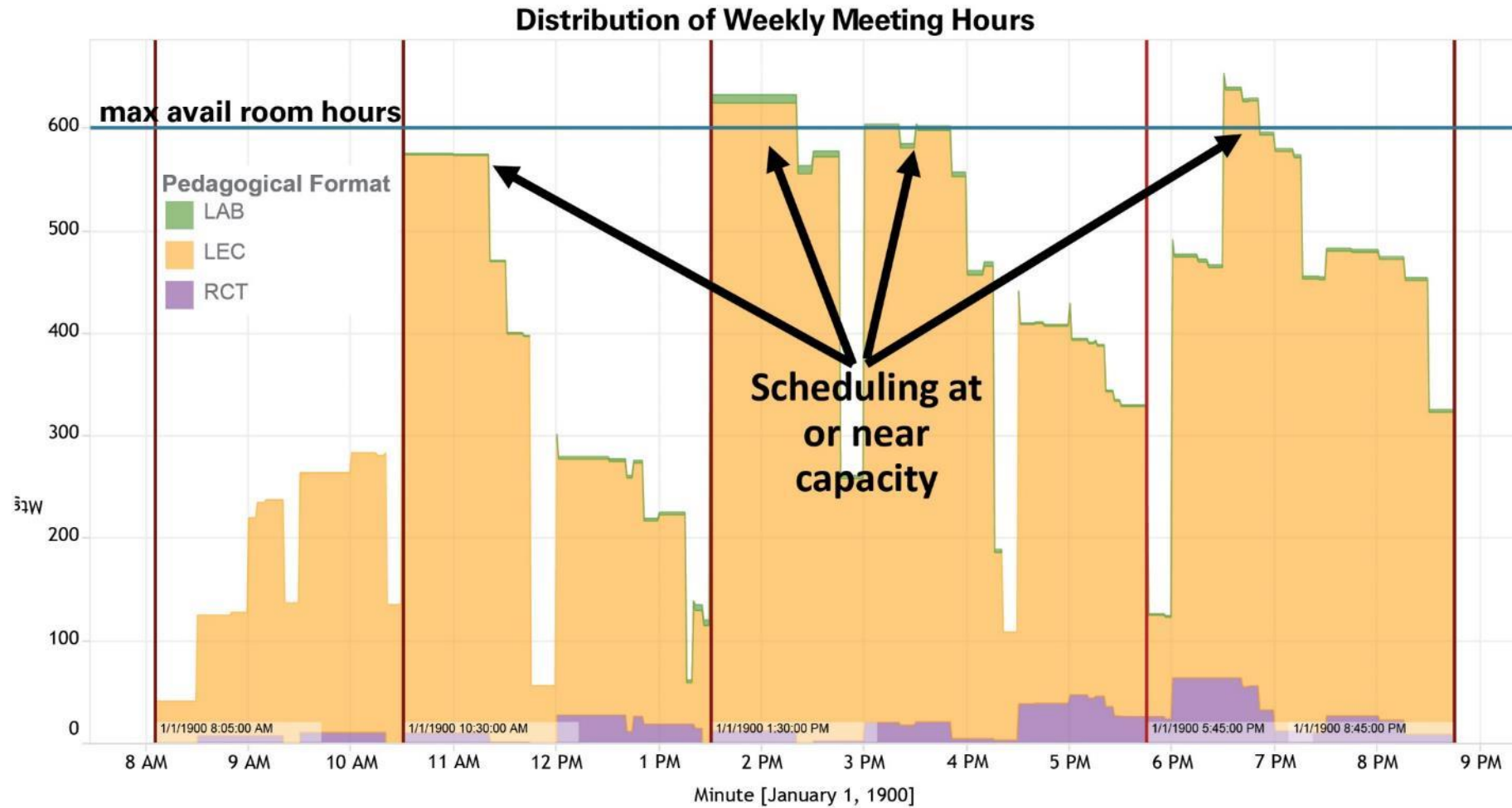


Mapping the Campus

- By section distributions
- By density of enrollments by time of day
- By department

Performance Metrics

Demand by Time of Day

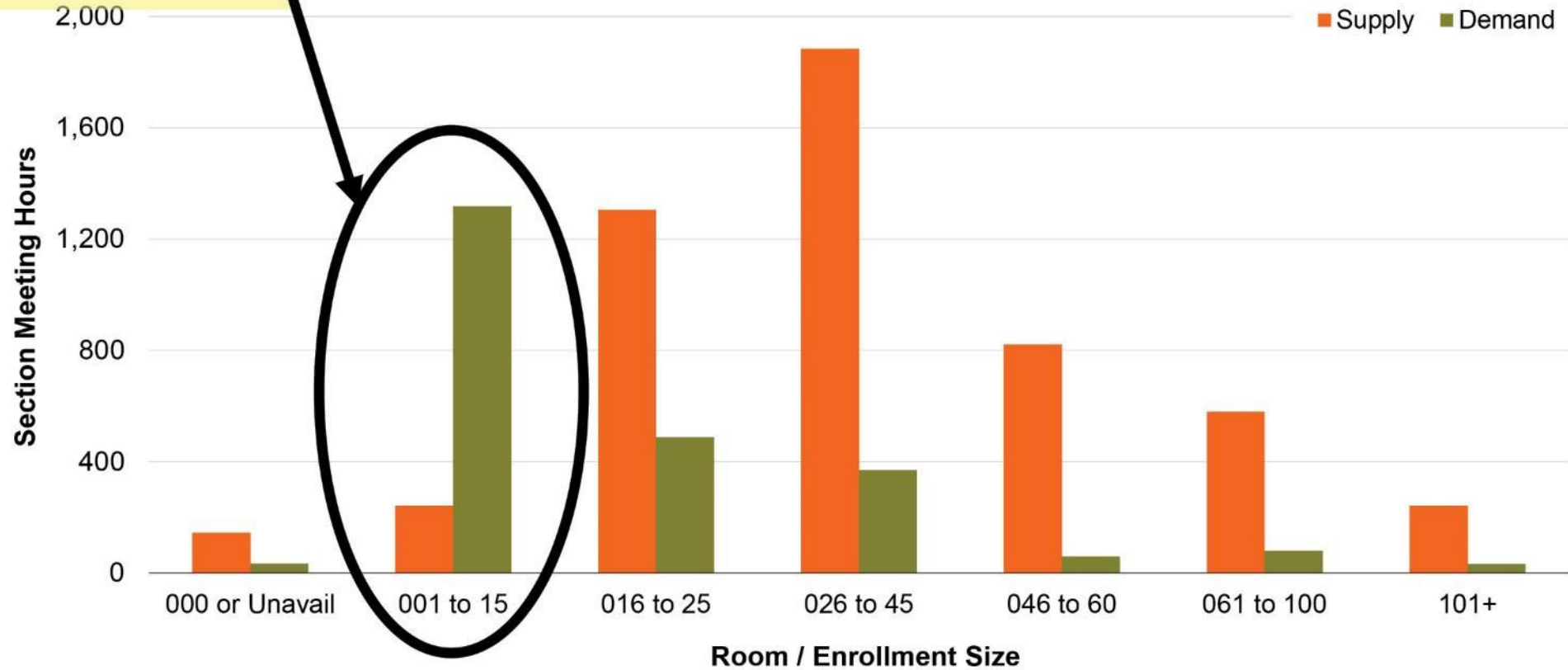


Performance Metrics

Supply vs. Demand

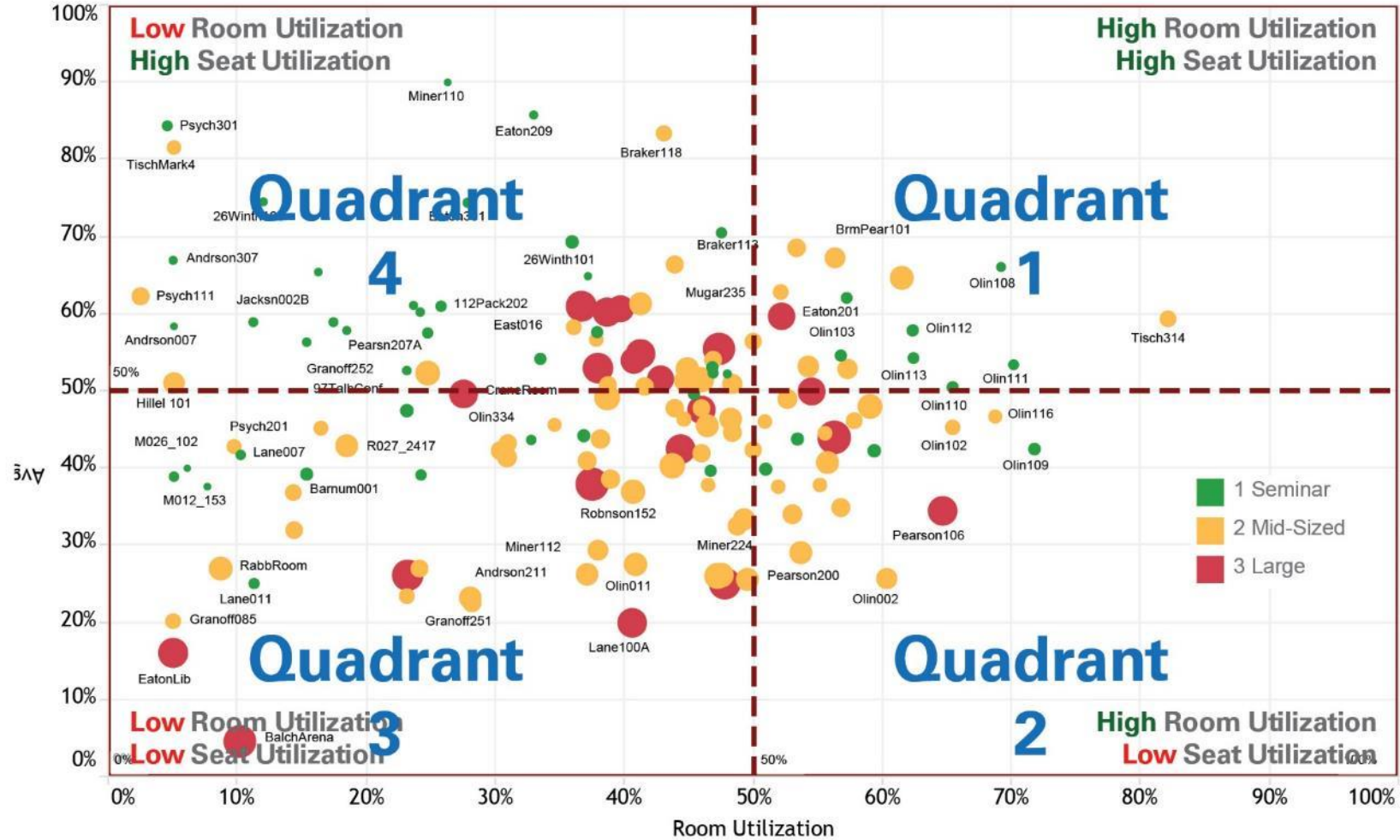
Supply vs. Demand 8:05am to 5:45pm Registrar Rooms

Significant mismatch
between supply and demand



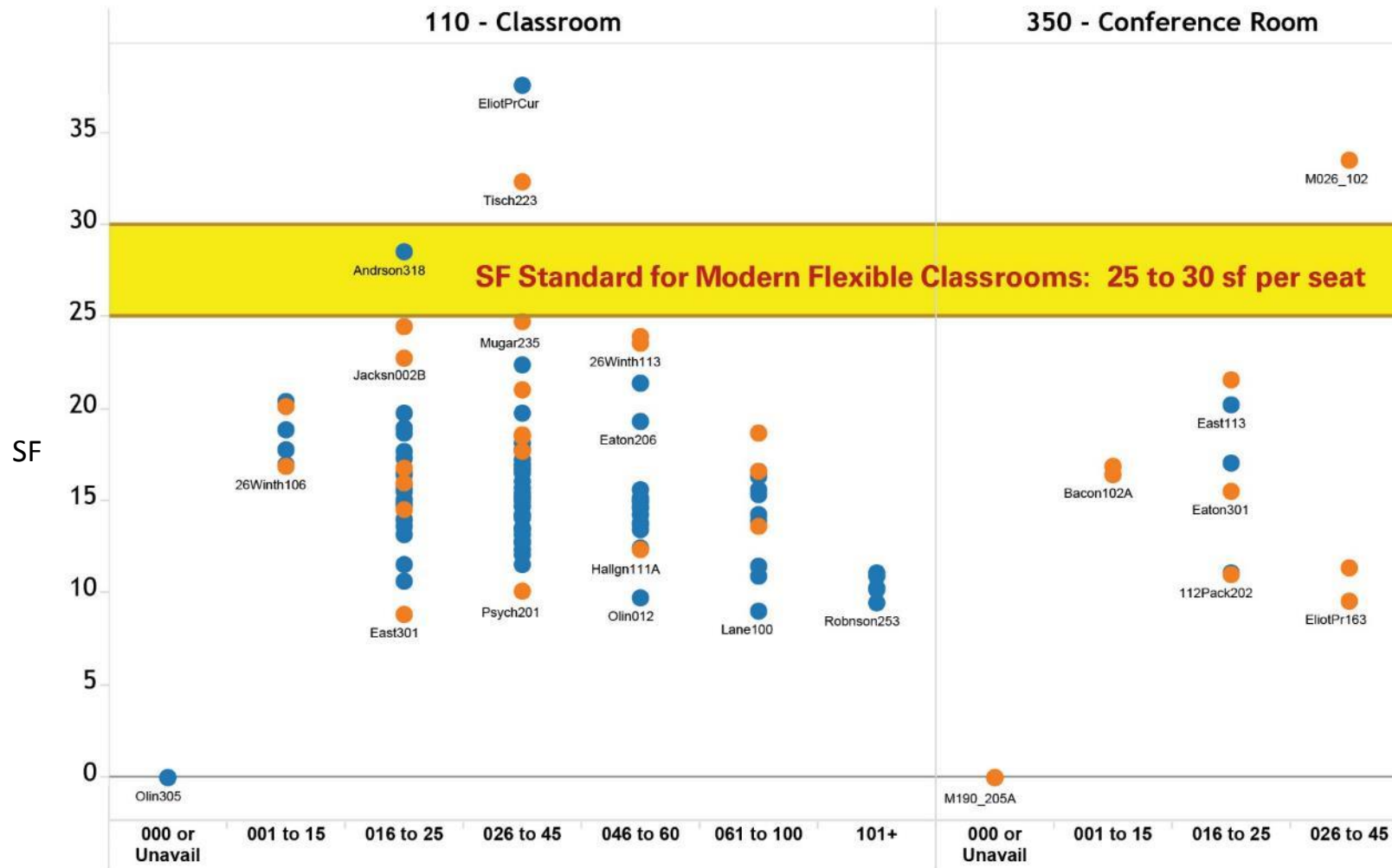
Performance Metrics

Room vs. Seat Utilization



Performance Metrics

Square Feet Per Seat

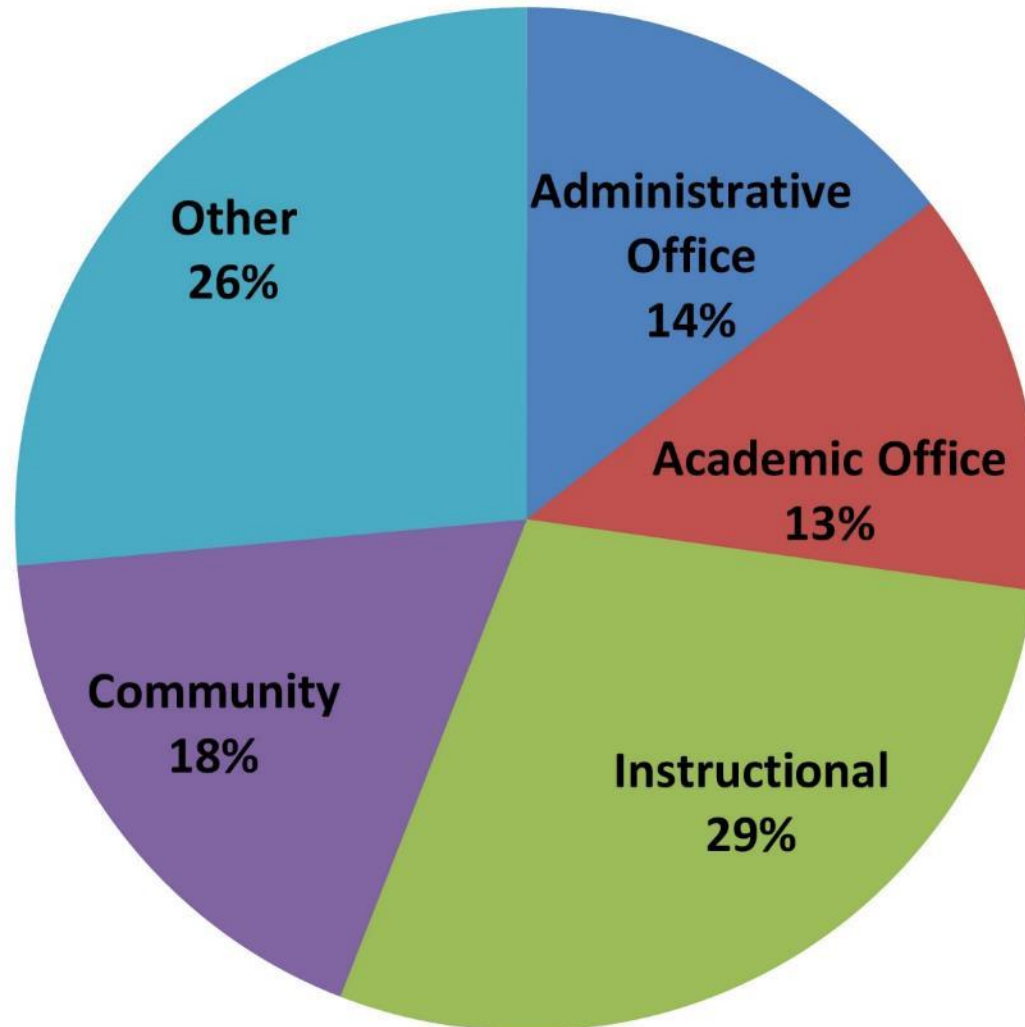


Demand Modeling

Computation of Optimal Inventory

FALL 2015		Average Daytime Utilization = 100%		Average Daytime Utilization = 90%		Average Daytime Utilization = 80%		Average Daytime Utilization = 70%	
Demand		44 hour wk		44 hour wk		44 hour wk		44 hour wk	
Class Size	Number of Section Meeting Hours	@		@		@		@	
		Utilization Rate	Rooms Needed	Utilization Rate	Rooms Needed	Utilization Rate	Rooms Needed	Utilization Rate	Rooms Needed
001 to 20	2,475	100%	57	90%	63	80%	71	70%	81
021 to 30	491	100%	11	90%	12	80%	14	70%	16
031 to 45	24	100%	1	90%	1	80%	1	70%	1
046 to 60	25	100%	1	90%	1	80%	1	70%	1
61+	8	100%	0	90%	0	80%	0	70%	0
NA or Unavail	14	100%	0	90%	0	80%	0	70%	0
Total	3,036		70		77		87		99

Campus Space Types



Balancing Program and Finances

Objective:

- › Balance College goals and objectives with realistic assessment of resources and financial requirements

