



UNIVERSITY TECHNOLOGY ADVISORY COMMITTEE

WOU BOARD OF TRUSTEES

FINANCE & ADMINISTRATION COMMITTEE (FAC)

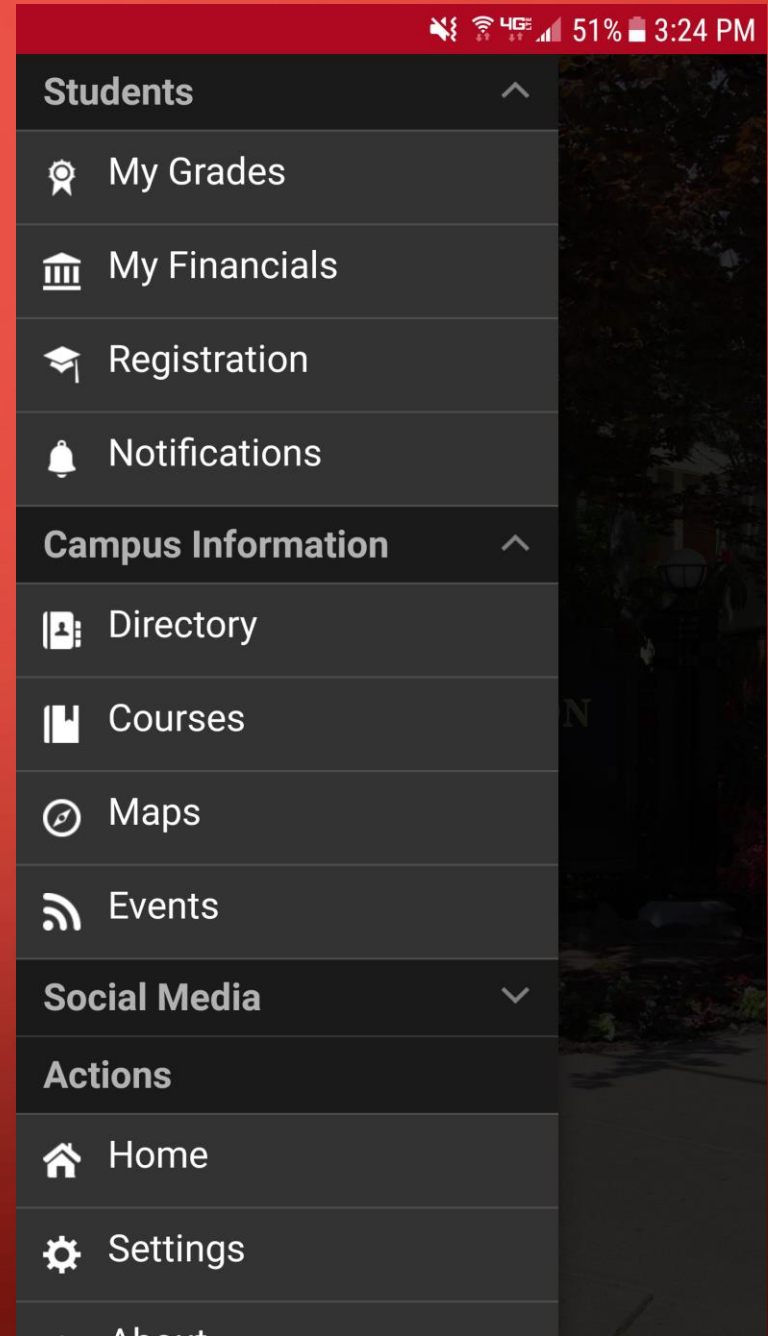
4/4/19

LMS REVIEW

- UTAC team (facilitated by Scott Carter)
- “Learning Management System”
 - Currently Moodle (open-source)
- Moodle satisfaction survey (sent March 2019)
 - Will do other market analysis/research
- Multiple LMS pilots (scheduled for Summer 2019)
- If a new LMS is selected, rollout tentatively Summer 2020

MOBILE APP

- UTAC sub-committee (chaired by Lisa Catto)
- “WOU App” can be downloaded here:
 - <http://www.wou.edu/~mansot/mobileapp.html>
- Current features:
 - Grades, Financials, Courses, Map, Employee directory, Social media
- Under final review by UTAC, then will be sent to Rex
- Goal: Launch in late May, available for SOAR



DUO (MULTI-FACTOR AUTHENTICATION)

- Passwords are no longer sufficient
- DUO is an easy-to-use mobile application
- Rollout via Portal
 - #1: UCS staff members
 - #2: Banner (admin pages) users
 - #3: Faculty/Staff
 - #4: Students
- Hardware tokens available for campus members w/o a smartphone

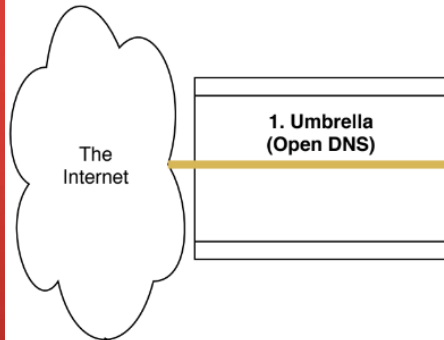
UNIVERSITY TECHNOLOGY PLAN

- Currently reviewing Technology plans (content and layout) from other Universities
- Committee will continue to collaborate to build one for WOU, incorporating best practices from other Universities

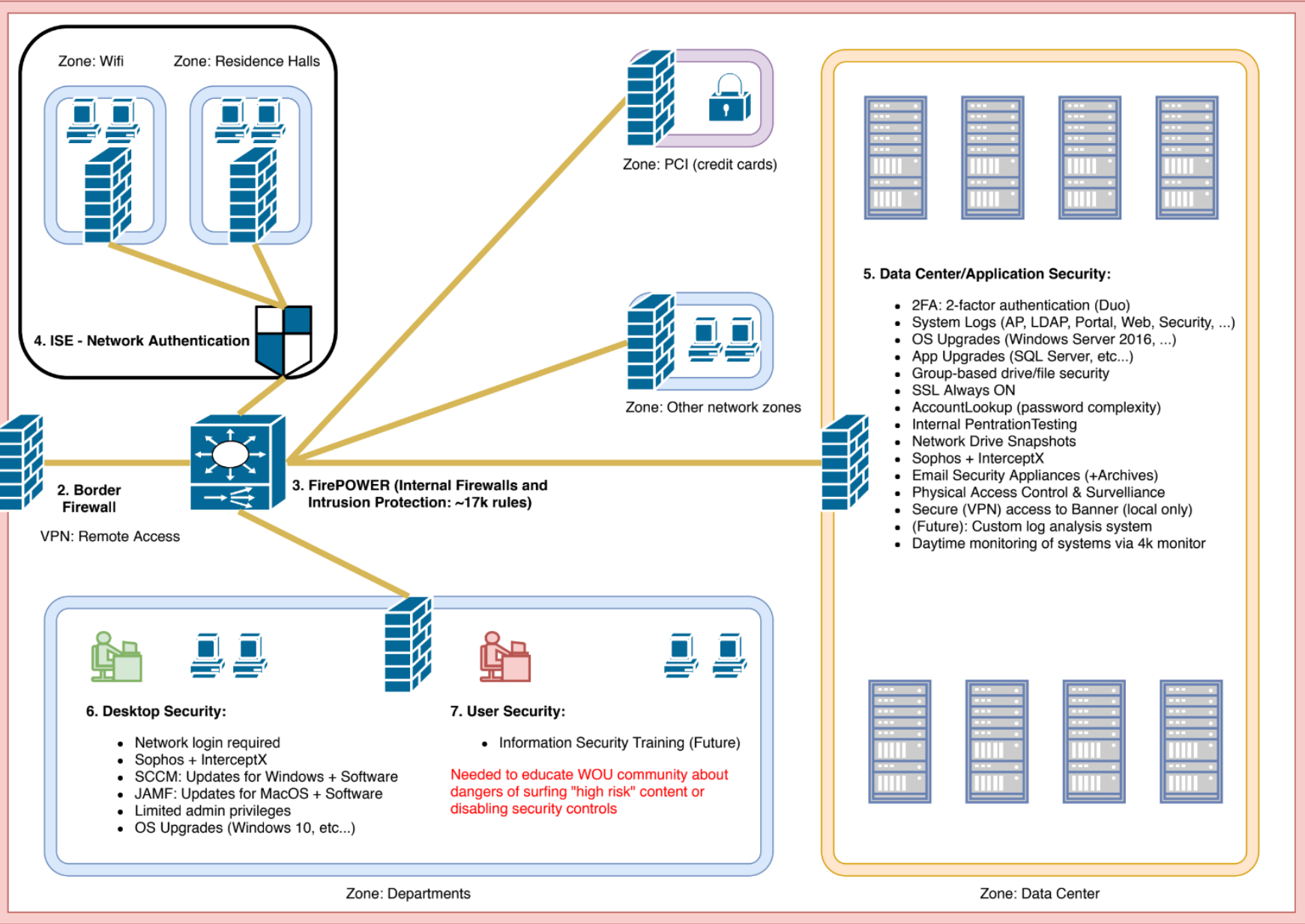
CYBERSECURITY

- Presentation at each UTAC meeting
 - 1/18: Layered security @ WOU (see next slide)
 - 2/22: CIS20 Framework
 - 3/22: DUO (multi-factor authentication)
- Developing a responsive security tool: redWOLF3

WOU: Layered Network Security



- 8. External Support:**
- Penetration Testing (CoalFire)
 - Vendor Support
 - Vendor information sessions
 - Vendor product demonstrations
 - CIS 20 Framework
 - PCI education and testing



			PHASE 1			
				DUE BY		
Overall completion %:			22.30	June 30		
			Initial review	% Data Center analysis complete	Data Center control in place	Data Center control automated
CIS Control 1: Inventory and Control of Hardware Assets				100.00		
1.1	Utilize an Active Discovery Tool		X	X		
1.2	Use a Passive Asset Discovery Tool		X	X	X	X
1.3	Use DHCP Logging to Update Asset Inventory		X	NA	NA	NA
1.4	Maintain Detailed Asset Inventory		X	X		
1.5	Maintain Asset Inventory Information		X	X		
1.6	Address Unauthorized Assets		X	X	X	X
1.7	Deploy Port Level Access Control		X	NA	NA	NA
1.8	Utilize Client Certificates to Authenticate Hardware Assets		X	NA	NA	NA
CIS Control 2: Inventory and Control of Software Assets				10.00		
2.1	Maintain Inventory of Authorized Software		X			
2.2	Ensure Software is Supported by Vendor		X			
2.3	Utilize Software Inventory Tools		X			